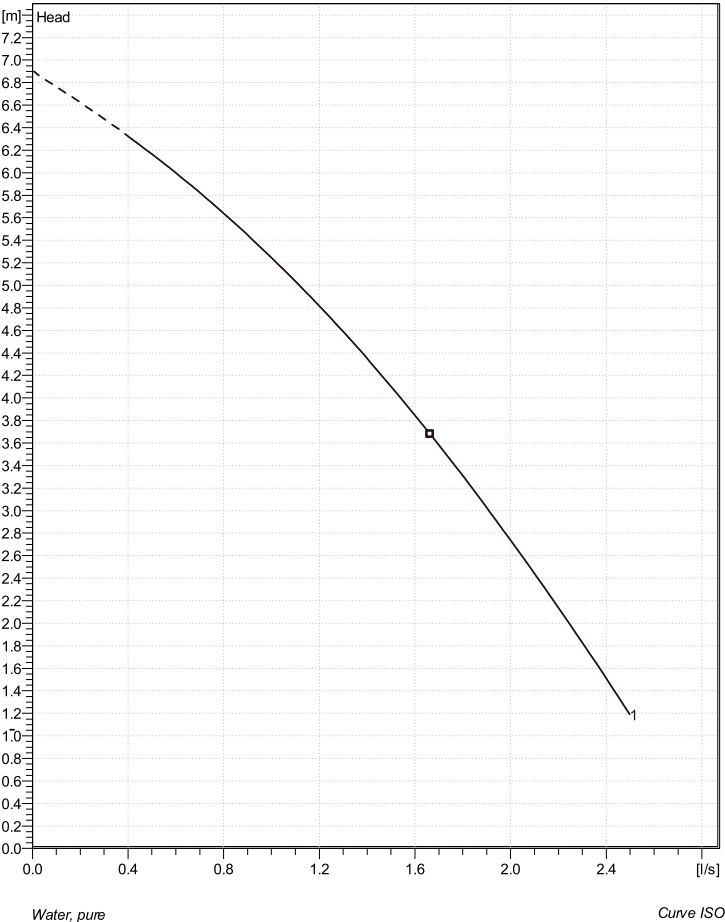


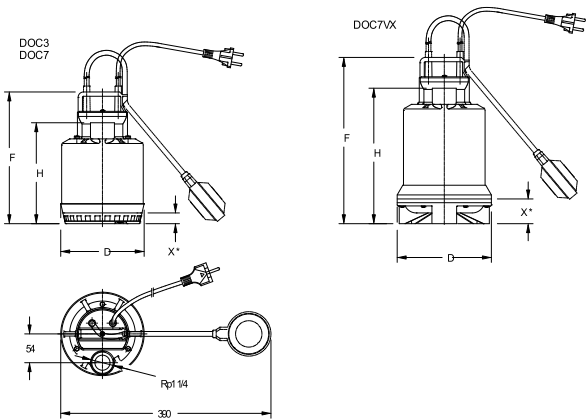
SX 2 1  
Technical specification



Note: Picture might not correspond to the current configuration.

|                         |      |
|-------------------------|------|
| <b>Impeller</b>         |      |
| Outlet diameter         | 0 mm |
| Suction Flange Diameter |      |
| Impeller diameter       | 0 mm |
| Number of blades        | 0    |

Installation: Pump with float switch



|                  |           |
|------------------|-----------|
| <b>Motor</b>     |           |
| Motor #          | SA 25M63D |
| Stator variant   |           |
| Frequency        | 50 Hz     |
| Rated voltage    | 230 V     |
| Number of poles  | 2         |
| Phases           | 1~        |
| Rated power      | 0.25 kW   |
| Rated current    | 1.43 A    |
| Starting current | 0 A       |
| Rated speed      | 2900 rpm  |

|              |
|--------------|
| Power factor |
| 1/1 Load     |
| 3/4 Load     |
| 1/2 Load     |

|                 |
|-----------------|
| Pump efficiency |
| 1/1 Load        |
| 3/4 Load        |
| 1/2 Load        |

Project:  
Project ID:  
Date:

## SX 2

1



### Performance curve

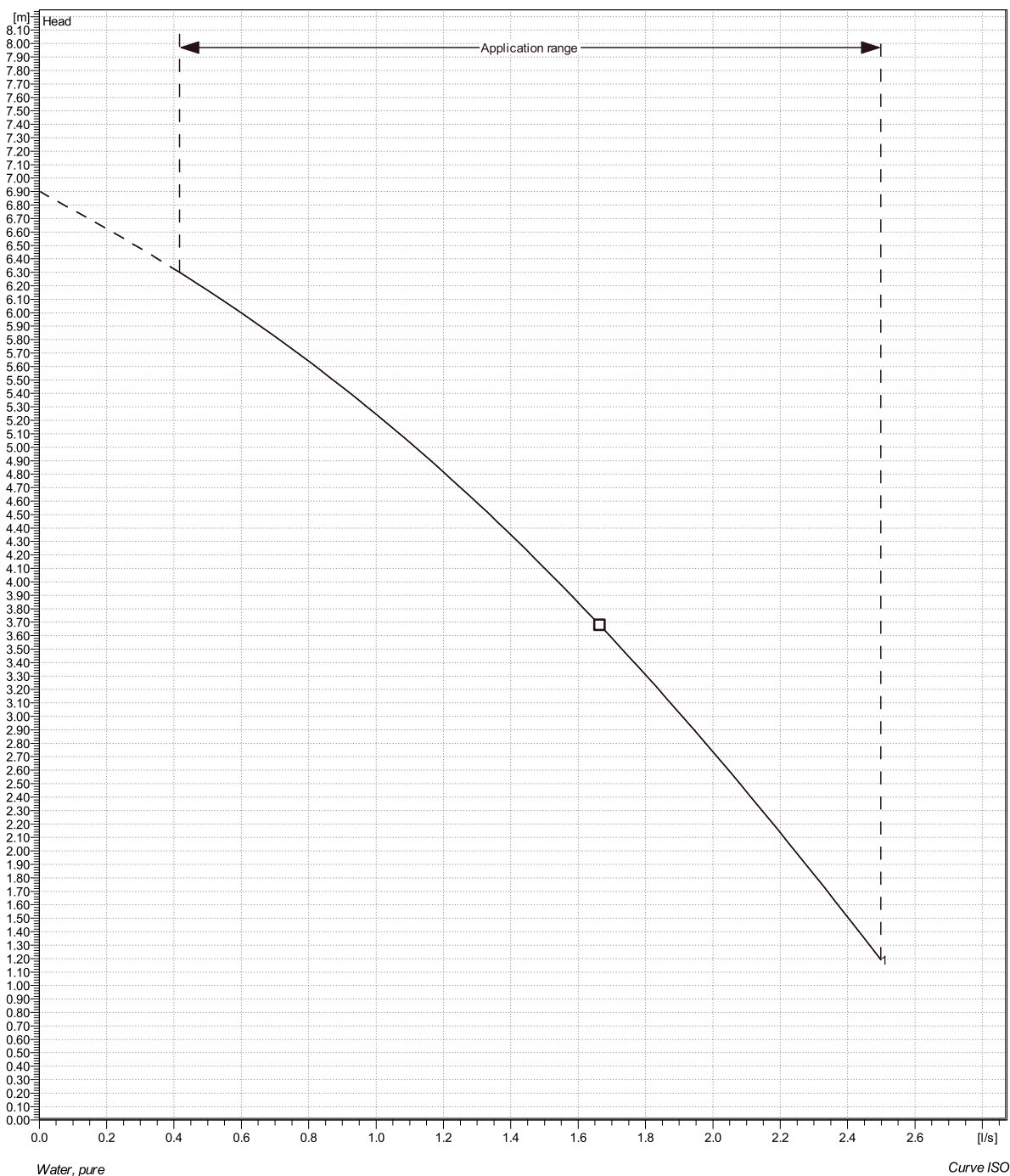
#### Pump

Outlet diameter 0 mm  
Suction Flange Diameter 0 mm  
Impeller diameter 0 mm  
Number of blades 0

#### Motor

Motor # SA 25M63D  
Stator variant  
Frequency 50 Hz  
Rated voltage 230 V  
Number of poles 2  
Phases 1~  
Rated power 0.25 kW  
Rated current 1.43 A  
Starting current 0 A  
Rated speed 2900 rpm

Power factor  
1/1 Load  
3/4 Load  
1/2 Load  
Pump efficiency  
1/1 Load  
3/4 Load  
1/2 Load

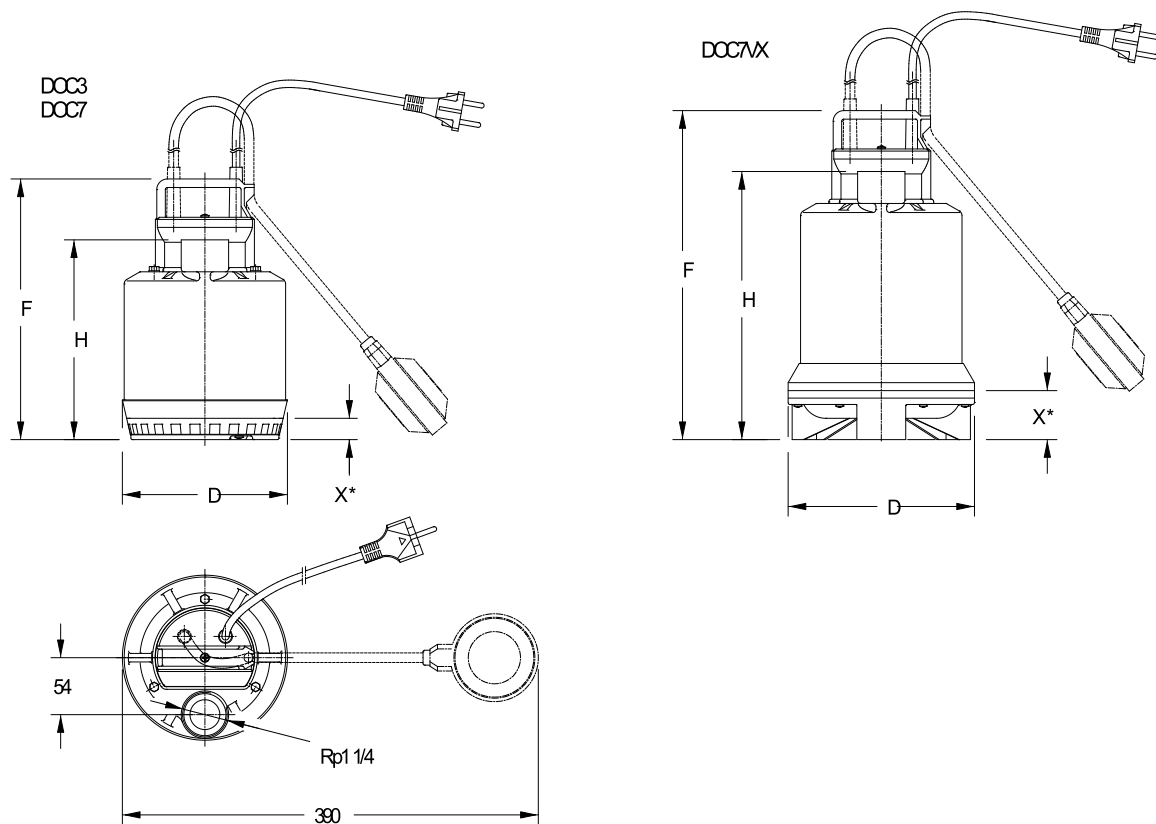


|         |            |            |                         |             |
|---------|------------|------------|-------------------------|-------------|
| Project | Project ID | Created by | Created on<br>1/10/2020 | Last update |
|---------|------------|------------|-------------------------|-------------|

## SX 2

### Dimensional Drawing

## Installation: Pump with float switch



Project:

Project ID:

Date: